

Basso Continuo

Miserere mei Deus

Antonio Biffi (1666/67–1733)

Edited by Don Fader

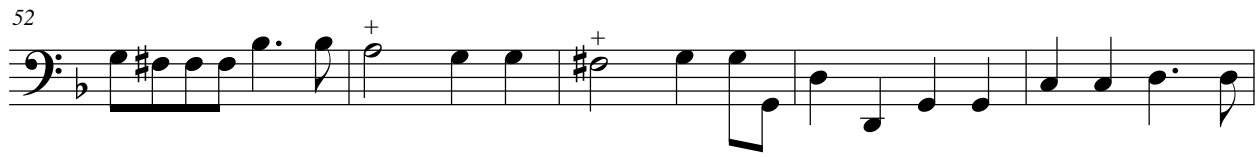
Largo

Musical score for Basso Continuo, Largo section, measures 1-25. The score is written in bass clef with a common time signature (C). The key signature has one flat (B-flat). The tempo is marked 'Largo'. The score consists of five staves of music. The first staff starts with a treble clef and a common time signature, then changes to a bass clef. The music is primarily composed of eighth and sixteenth notes, with some quarter notes. There are several accidentals, including sharps and naturals, throughout the piece. The piece ends with a double bar line and a final note.

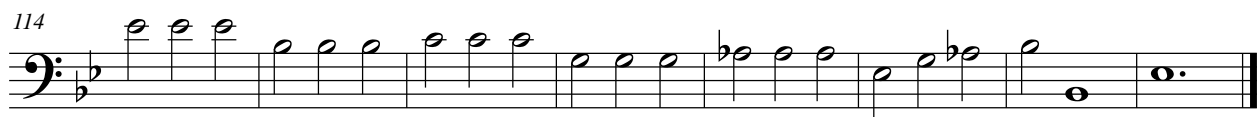
Récit: Et secundum multitudinem

Andante

Musical score for Basso Continuo, Récit section, measures 32-47. The score is written in bass clef with a common time signature (C). The key signature has one flat (B-flat). The tempo is marked 'Andante'. The score consists of four staves of music. The first staff starts with a treble clef and a common time signature, then changes to a bass clef. The music is primarily composed of quarter and eighth notes, with some sixteenth notes. There are several accidentals, including sharps and naturals, throughout the piece. The piece ends with a double bar line and a final note.



Duo: Amplius lava me



Solo: Quoniam iniquitatem meam

Andante e piano sempre

122



126



130



134



138



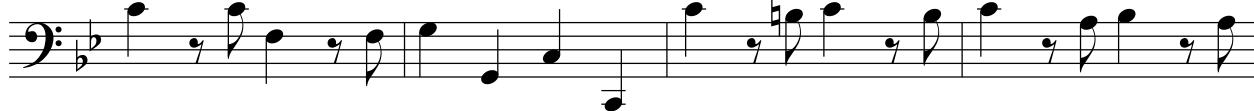
142



146



150



154



158



Chœur: Tibi soli peccavi

Tous

161



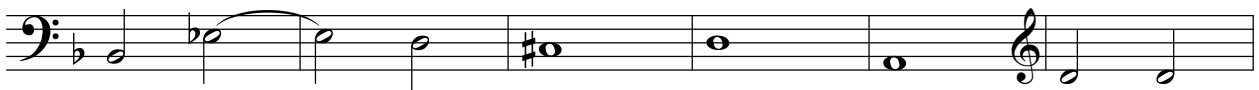
167



173



178



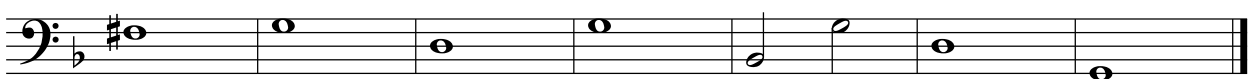
184



190



196



Trio: Ecce enim iniquitatibus

203



209



216



222



229



236



Solo: Ecce enim veritatem



Duo: Asperges me hyssopo

270



273



277



281



285



289



293



297



301



305



Duo: Auditui meo

310



317



324



329



336



344



351



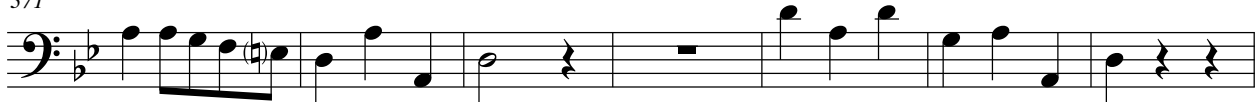
358



364



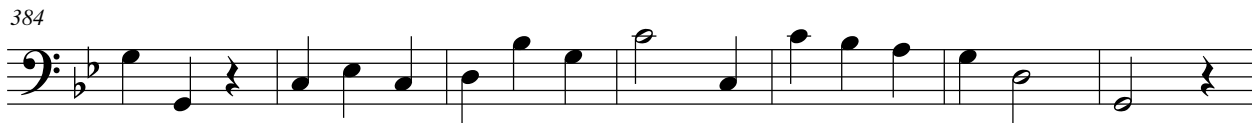
371



378



384



391



397



403




Chœur: Averte faciem tuam

409



413



418



423



428

Lentement



[Trio]: Cor mundum crea

434



442



450



458



465



Duo: Ne projicias me



Récit: Redde mihi

498



506



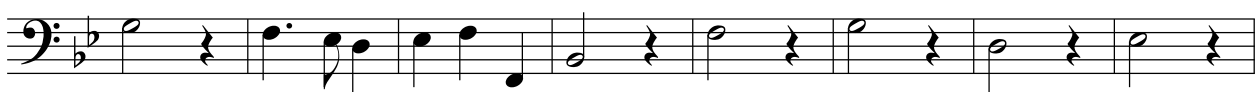
513



520



527



535



543



550



Recitativo Solo: Docebo iniquos

557



560



563



566



569



572



574



Chœur: Libera me

577



584



592



Récit: Domine, labia mea

601




Musical notation for measure 601, bass clef, 3/4 time signature, key signature of two flats. The notation consists of a single staff with a series of eighth and quarter notes and rests.

608



Musical notation for measure 608, bass clef, 3/4 time signature, key signature of two flats. The notation consists of a single staff with a series of eighth and quarter notes and rests.

615



Musical notation for measure 615, bass clef, 3/4 time signature, key signature of two flats. The notation consists of a single staff with a series of eighth and quarter notes and rests.

621



Musical notation for measure 621, bass clef, 3/4 time signature, key signature of two flats. The notation consists of a single staff with a series of eighth and quarter notes and rests.

627



Musical notation for measure 627, bass clef, 3/4 time signature, key signature of two flats. The notation consists of a single staff with a series of eighth and quarter notes and rests. A sharp sign is present above the second measure.

633



Musical notation for measure 633, bass clef, 3/4 time signature, key signature of two flats. The notation consists of a single staff with a series of eighth and quarter notes and rests.

639



Musical notation for measure 639, bass clef, 3/4 time signature, key signature of two flats. The notation consists of a single staff with a series of eighth and quarter notes and rests.

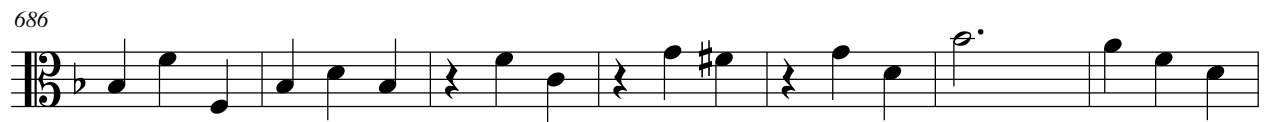
645



Musical notation for measure 645, bass clef, 3/4 time signature, key signature of two flats. The notation consists of a single staff with a series of eighth and quarter notes and rests, ending with a double bar line.

Récit: Quoniam si voluisses sacrificium

652 Le 2^e dessus de violon [sic: viola] joüe la Basse seule



714

Musical notation for measure 714, featuring a bass clef, a key signature of one flat (B-flat), and a common time signature. The notation includes a series of eighth notes, a dotted quarter note with a sharp sign and a plus sign in a box above it, and a half note.

722

Musical notation for measure 722, featuring a bass clef, a key signature of one flat (B-flat), and a common time signature. The notation includes a series of eighth notes, a dotted quarter note, and a half note.

729

Musical notation for measure 729, featuring a bass clef, a key signature of one flat (B-flat), and a common time signature. The notation includes a series of eighth notes, a dotted quarter note, and a half note.

736

Musical notation for measure 736, featuring a bass clef, a key signature of one flat (B-flat), and a common time signature. The notation includes a series of eighth notes, a dotted quarter note, and a half note.

743

Musical notation for measure 743, featuring a bass clef, a key signature of one flat (B-flat), and a common time signature. The notation includes a series of eighth notes, a dotted quarter note, and a half note.

750

Musical notation for measure 750, featuring a bass clef, a key signature of one flat (B-flat), and a common time signature. The notation includes a series of eighth notes, a dotted quarter note, and a half note.

756

Musical notation for measure 756, featuring a bass clef, a key signature of one flat (B-flat), and a common time signature. The notation includes a series of eighth notes, a dotted quarter note, and a half note.

Récit: Sacrificium Deo

762

767

771

775

780

784

789

794

799

805

[+]

[+]

The image shows a musical score for the Basso Continuo part of 'Récit: Sacrificium Deo' by Antonio Biffi. The score is written in bass clef with a common time signature (C). It consists of ten staves of music, each starting with a measure number: 762, 767, 771, 775, 780, 784, 789, 794, 799, and 805. The music is a single melodic line with various rhythmic values and accidentals. There are two instances of a bracketed plus sign '[+]' below the staves, one at measure 775 and another at measure 805. The score ends with a double bar line at the end of the final staff.

Chœur: Benigne fac, Domine

810



816



822

Gay



828



834



840



846



852



859



866

