

Violin 1

Miserere mei Deus

Antonio Biffi (1666/67–1733)

Edited by Don Fader

Largo

Musical score for Violin 1, Largo section. The score is written in treble clef, common time (C), and B-flat major. It consists of three staves of music. The first staff begins with a whole rest, followed by a series of notes: G4, A4, Bb4, A4, G4, F4, E4, D4, C4. The second staff starts at measure 7 with notes: G4, A4, Bb4, A4, G4, F4, E4, D4, C4, Bb4, A4, G4, F4, E4, D4, C4. A fermata is placed over the final note, with the number 12 above it. The third staff starts at measure 25 with notes: G4, A4, Bb4, A4, G4, F4, E4, D4, C4, Bb4, A4, G4, F4, E4, D4, C4. The piece ends with a double bar line.

Et Secundum Multitudinem

Andante

Musical score for Violin 1, Et Secundum Multitudinem section. The score is written in treble clef, common time (C), and B-flat major. It consists of seven staves of music. The first staff starts at measure 32 with notes: G4, A4, Bb4, A4, G4, F4, E4, D4, C4. The second staff starts at measure 36 with notes: G4, A4, Bb4, A4, G4, F4, E4, D4, C4, Bb4, A4, G4, F4, E4, D4, C4. The third staff starts at measure 40 with notes: G4, A4, Bb4, A4, G4, F4, E4, D4, C4. The fourth staff starts at measure 45 with notes: G4, A4, Bb4, A4, G4, F4, E4, D4, C4. The fifth staff starts at measure 50 with notes: G4, A4, Bb4, A4, G4, F4, E4, D4, C4. The sixth staff starts at measure 57 with notes: G4, A4, Bb4, A4, G4, F4, E4, D4, C4. The piece ends with a double bar line.

Amplius lava me -- Tacet

Quoniam iniquitatem

Andante e piano sempre



Chœur: Tibi soli peccavi

Tous

161

168

177

187

195

Trio: Ecce enim iniquitatibus -- Tacet

Solo: Ecce enim veritatem

243

246

257

263

266

Duo: Asperges me hyssopo -- Tacet

Duo: Auditui meo

Musical score for Violin 1 part, measures 310-374. The score is written in treble clef with a key signature of two flats (B-flat and E-flat) and a 3/4 time signature. The music features various rhythmic patterns, including eighth and sixteenth notes, and rests. Several measures contain performance markings: measure 310 has a '+' above the staff; measure 317 has '+' above and below; measure 323 has '+' above and below; measure 329 has a '4' above a four-measure rest; measure 339 has a '3' above a three-measure rest; measure 347 has '+' above; measure 354 has '+' above; measure 361 has '+' above; measure 368 has '+' above; and measure 374 has '+' above and a '6' above a six-measure rest.

384

391

396

404

Musical score for Violin 1 part, measures 384-404. The score is in G minor (one flat) and 3/4 time. It features a melodic line with various rhythmic patterns, including a triplet of eighth notes at measure 396 and a quarter note triplet at measure 404. There are also several measures with rests and accidentals.

Chœur: Averte faciem tuam

409

414

423

428

Lentement

Musical score for Chœur: Averte faciem tuam, measures 409-428. The score is in G minor (one flat) and 3/4 time. It features a melodic line with various rhythmic patterns, including a quarter note triplet at measure 414 and a quarter note triplet at measure 428. There are also several measures with rests and accidentals.

[Trio]: Cor mundum crea -- Tacet

Duo: Ne projicias me -- Tacet

Récit: Redde mihi

Musical score for Violin 1 part, measures 498-551. The score is in G minor (one flat) and 3/4 time. It consists of six staves of music. Measure numbers 498, 506, 515, 531, 546, and 551 are indicated at the beginning of their respective staves. The music features a mix of eighth and sixteenth notes, with some triplet markings (3) and longer rests (10). There are also some accidentals, including a sharp sign (+) in measure 515 and a plus sign (+) in measure 551. The score ends with a double bar line in measure 551.

Recitativo Solo: Docebo iniquos -- Tacet

Chœur: Libera me

577

581

588

592

596

Récit: Domine, labia mea

601

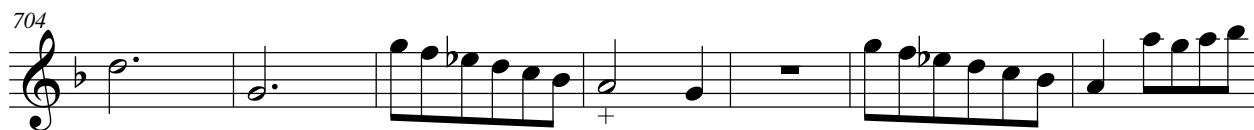
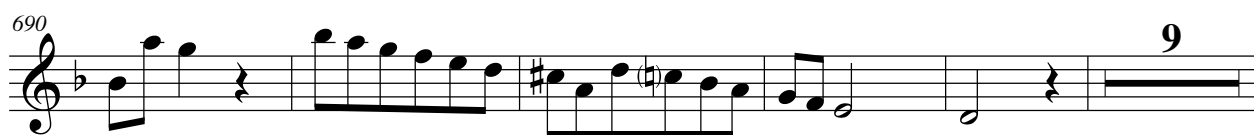
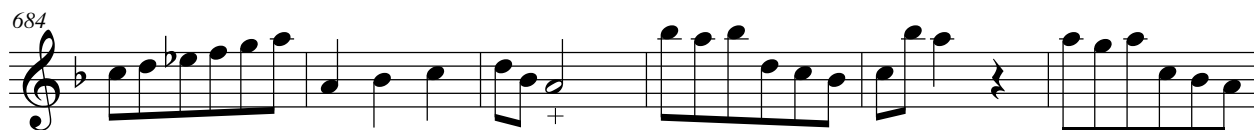
608

630

645

Récit: Quoniam si voluisses sacrificium

652 Premier dessus de violon seul



Musical score for Violin 1 part, measures 725-755. The score is written in treble clef with a key signature of one flat (B-flat). It features several measures with triplets (marked '3') and doublets (marked '2'). There are also measures with a '+' sign above the staff and a '[+]' sign below the staff. The piece concludes with a double bar line.

Récit: Sacrificium Deo

Musical score for Récit: Sacrificium Deo, measures 762-772. The score is written in treble clef with a common time signature (C). It features several measures with triplets (marked '3') and doublets (marked '2'). There are also measures with a '+' sign above the staff and a '[+]' sign below the staff. The piece concludes with a double bar line.

777

782

786

790

794

799

803

806

[+]

The image shows a page of musical notation for a violin part. It consists of eight staves of music, each beginning with a measure number. The notation is in treble clef and includes various rhythmic values, accidentals, and phrasing slurs. A bracketed plus sign is present at the end of the first staff. The music concludes with a double bar line at the end of the eighth staff.

Chœur: Benigne fac, Domine

810

815

819

823 **Gay**

829

837

846

860

867

Detailed description: This is a page of a musical score for Violin 1 part, measures 810-867. The music is in a single system with a key signature of one flat (B-flat) and a common time signature (C). The score consists of nine staves of music. The first staff (810) begins with a treble clef and a common time signature. The music features various rhythmic patterns, including eighth and sixteenth notes, and rests. There are several accidentals, including naturals and sharps. The second staff (815) continues the melodic line with similar rhythmic patterns. The third staff (819) shows a change in rhythm with more eighth notes. The fourth staff (823) is marked 'Gay' and features a more rhythmic, eighth-note pattern. The fifth staff (829) includes a triplet of eighth notes. The sixth staff (837) also features a triplet of eighth notes. The seventh staff (846) includes a quintuplet of eighth notes and another triplet. The eighth staff (860) continues the melodic line with eighth notes. The ninth staff (867) concludes the passage with a final cadence, marked with a double bar line and repeat dots.